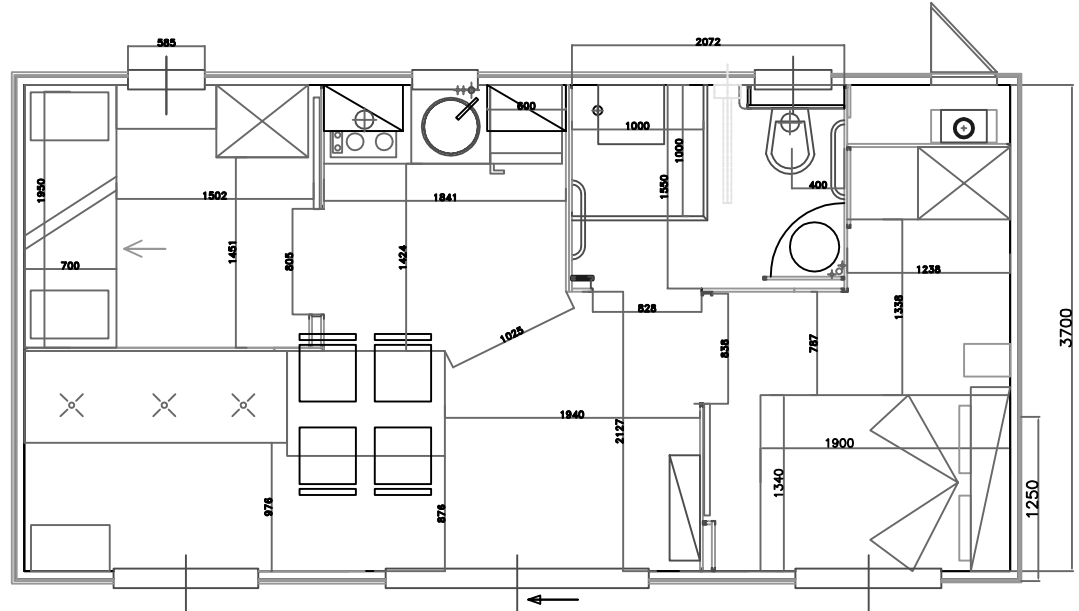
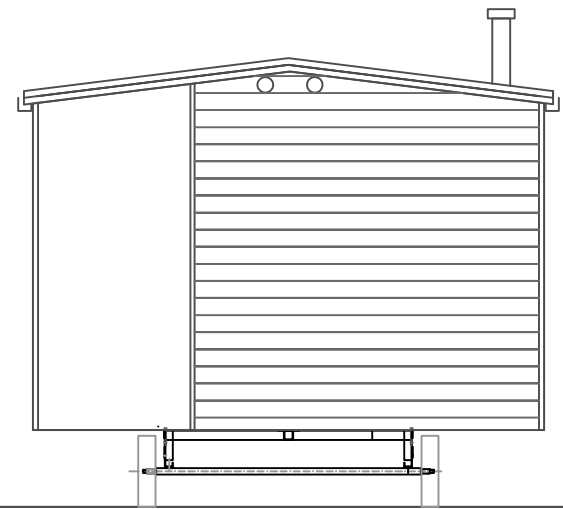
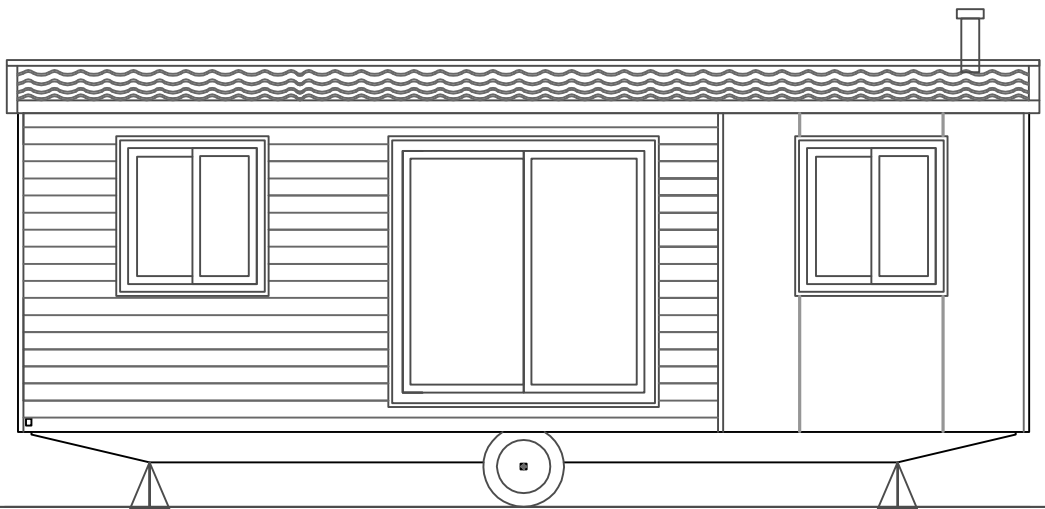






4 3 2 1



Some of these homes have been adapted with spaces and increased internal routes to facilitate any customers with motorial difficulties but does not have all the requirements indicated in of law provided for civil construction of residential in the matter of removal of architectural barriers

REV. 07-04-2016

NOME FILE	GAMMA CC-2012-4 M		
DESCRIZIONE	CrippaCampagna S.r.l. Via del Campo, 8 - 02048 Capranica (VT) - Italy Tel. +39 0765 811881 - Fax +39 0765 811103 email: info@crippaconcept.it - www.crippaconcept.it		
CONTRATTO			
CONTROLLO			
APPR.			
RLASCIATO			
DATA :	MESE/AN	FSCM	NR. DIS.
Revisione	SCALA	PESO	FOGLIO
<p>Il presente disegno è di proprietà Crippa Campagna S.r.l. , Pertanto non può essere : copiato, riprodotto, mostrato o farsa secondo le vigenti leggi</p>			

CRIPPAconcept
ITALIAN DESIGN
NX-15-120 -770 x 400
TIPO - A 11
C/ACCESSIBILITA'
FACILITATA

D
C
B
A

B
A

4 3 2 1